

# Echelon Biosciences Inc.

## Anti-Rat F1-ATP Synthase Alpha

Z-RATPa

Support: echelon@echelon-inc.com

### **Description:**

Rabbit polyclonal antibody to rat F1-ATPase alpha subunit.

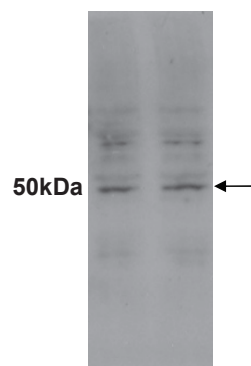
### **Applications:**

Western - 1:1000

IF - 1:100

Other in vitro and cellular applications are possible using this antibody, but have not been verified by Echelon Biosciences.

### **Data: Western**



Western blot of whole cell lysate from HepG2 cells

### **Properties:**

Form – liquid

Storage instructions – Store at 4 °C for up to 30 days. Aliquot and store at -20 °C if longer storage is necessary. Avoid repeated freeze/thaw cycles.

Storage buffer – no additives

Concentration – undetermined; estimated 10 mg/mL

Purity – antiserum

Immunogen – purified rat F1-ATP Synthase Alpha subunit

Clonality – polyclonal

Isotype – IgG

### **Related Products:**

Products	Catalog Number
Assays, Reagents, and Lipids	
Anti-F1 ATP Synthase Beta	Z-RATPb
Resveratrol	B-0021
Cardiolipin	L-C160
Fluorescein conjugated Cardiolipin	L-C16F

### **Specificity:**

No cross reactivity has been observed with other ATPase subunits. Some species cross reactivity can be expected based on amino acid conservation.

### **Background:**

ATP synthase is comprised of 2 major units, the Fo and F1. Five different subunits make up the F1 unit: 3  $\alpha$ , 3  $\beta$ , 1  $\delta$ , 1  $\gamma$ , and 1  $\epsilon$  subunits. The  $\alpha$  and  $\beta$  subunit are localized to the mitochondrial and plasma membranes and the  $\beta$  subunit is thought to be involved in the satiation response through binding to enterostatin.

Technical Data Sheet Rev. 2, 08-1-18 - **For research use only.** Not intended or approved for diagnostic or therapeutic use.



Echelon Biosciences Inc.

Ph: 866-588-0455

Fax: 801-588-0497

Echelon-inc.com