

# Echelon Biosciences Inc.

## Anti-Rat F1-ATP Synthase Beta

Z-RATPb

Support: echelon@echelon-inc.com

### Description:

Rabbit polyclonal antibody to rat F1-ATPase beta subunit.

### Applications:

Western - 1:1000

IF - 1:100

Other in vitro and cellular applications are possible using this antibody, but have not been verified by Echelon Biosciences.

### Properties:

Form - liquid

Storage instructions - Store at 4 °C for up to 30 days. Aliquot and store at -20 °C if longer storage is necessary. Avoid repeated freeze/thaw cycles.

Storage buffer - no additives

Concentration - undetermined; estimated 10 mg/mL

Purity - antiserum

Immunogen - purified rat F1-ATP Synthase Beta subunit

Clonality - polyclonal

Isotype - IgG

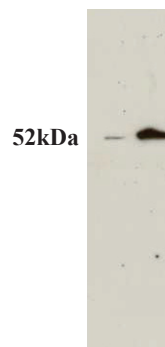
### Specificity:

No cross reactivity has been observed with other ATPase subunits. Some species cross reactivity can be expected based on amino acid conservation.

### Background:

ATP synthase is comprised of 2 major units, the Fo and F1. Five different subunits make up the F1 unit: 3  $\alpha$ , 3  $\beta$ , 1  $\delta$ , 1  $\gamma$ , and 1  $\epsilon$  subunits. The  $\alpha$  and  $\beta$  subunit are localized to the mitochondrial and plasma membranes and the  $\beta$  subunit is thought to be involved in the satiation response through binding to enterostatin.

### Data: Western



Western blot of whole cell lysate from rat hypothalamus with 10x and 1x dilutions (left, right)

### References:

1. Yang J, Wong RK, Park M, Wu J, Cook JR, York DA, Deng S, Markmann J, Naji A, Wolf BA, Gao Z. (2006) Leucine regulation of glucokinase and ATP synthase sensitizes glucose-induced secretion in pancreatic  $\beta$ -cells. Diabetes 55:193-201
2. Park M, Lin L, Thomas S, Braymer HD, Smith PM, Harrison DHT, York DA. (2004) The F1-ATPase  $\beta$ -subunit is the putative enterostatin receptor. Peptides 25:2127-2133

### Related Products:

Products	Catalog Number
Assays, Reagents, and Lipids	
Anti-F1 ATP Synthase Alpha	Z-RATPa
Resveratrol	B-0021
Cardiolipin	L-C160
Fluorescein conjugated Cardiolipin	L-C16F

Technical Data Sheet Rev. 2, 08-1-18 - For research use only. Not intended or approved for diagnostic or therapeutic use.



Ph: 866-588-0455

Fax: 801-588-0497

Echelon-inc.com