

Echelon Biosciences Inc.

Goat Anti-Human Autotaxin Antibody

Z-P400

Support: echelon@echelon-inc.com

Description:

Goat polyclonal antibody targeting human Autotaxin (ATX)

Applications:

WB – 1:1000

ELISA – 1:1000

Other in vitro and cellular applications are possible using this antibody, but have not been verified by Echelon Biosciences.

Properties:

Form – liquid

Storage instructions – Antibody is stable for up to 1 year at -20°C. Antibody is stable at 4°C for up to 60 days. Avoid repeated freeze/thaw cycles.

Storage buffer – PBS, pH 7.4

Concentration – 1 mg/mL

Purity – affinity purified

Immunogen – ATX peptide

Clonality – polyclonal

Isotype – IgG

Specificity:

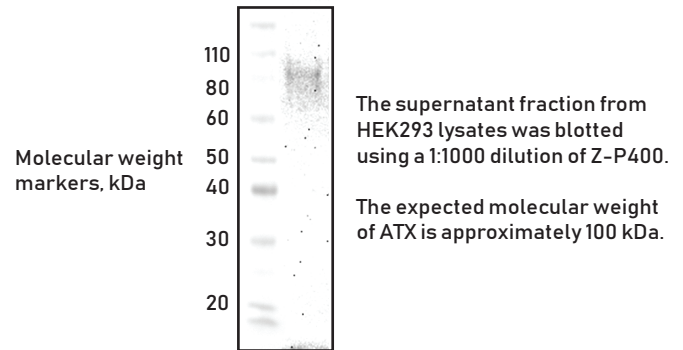
Anti-ATX antibody recognizes endogenous human ATX and is predicted to recognize rat, mouse, horse, and feline ATX based on amino acid conservation.

Background:

ATX, also known as ENPP2, cleaves choline from lysophosphatidylcholine forming lysophosphatidic acid (LPA), a potent mitogen that has been implicated in the pathophysiology of ovarian cancer. ATX has been demonstrated to increase cell motility, neovascularization, proliferation, and aggressiveness of tumors and is upregulated in numerous cancer lineages (non-small cell lung, glioma, mammary carcinoma, renal cell carcinoma, hepatocellular carcinoma). In addition, dysregulation of the ATX/LPA pathway is central to the pathophysiology of idiopathic pulmonary fibrosis, rheumatoid arthritis, and other inflammatory diseases.

Data:

Western blot, HEK cells



References:

1. Nakamura R, Okura T, Fujioka Y, Sumi K, Matsuzawa K, Izawa S, et al. (2017) Serum fatty acid-binding protein 4 (FABP4) concentration is associated with insulin resistance in peripheral tissues, A clinical study. PLoS ONE. 12(6)
2. Meng G, Tang X, Yang Z, Benesch MGK, Marshall A, Murray D, et al. (2017) Implications for breast cancer treatment from increased autotaxin production in adipose tissue after radiotherapy. Faseb J. 31(9) 4064-4077
3. Lee B-H, Kim H-K, Jang M, Kim H-J, Choi S-H, Hwang S-H, et al. (2017) Effects of Gintonin-Enriched Fraction in an Atopic Dermatitis Animal Model: Involvement of Autotaxin Regulation. Biol. Pharm. Bull. 40(7):1063-70.

Related Products:

Products	Catalog Number
Assays and Enzymes	
Autotaxin Enzyme, active	E-4000
Autotaxin Activity Assay	K-4100
Autotaxin ELISA	K-5600
Autotaxin Assay Service	T-4100
Fluorescent ATX Substrates	
FS-3 (lysoPLD)	L-2000
ATX-red	L-2010

Technical Data Sheet Rev. 2, 04-16-20 - For research use only. Not intended or approved for diagnostic or therapeutic use.



Echelon Biosciences Inc.

Ph: 866-588-0455

Fax: 801-588-0497

Echelon-inc.com