

Echelon Biosciences Inc.

Rat Anti-LPLA2

Z-PLPLA2

Support: echelon@echelon-inc.com

Description:

Rat monoclonal antibody targeting LPLA2

Applications:

Western - 1:1000¹

IF - 1:500¹

Other in vitro and cellular applications are possible using this antibody, but have not been verified by Echelon Biosciences.

Properties:

Form - liquid

Storage instructions - Store at 4 °C for up to 30 days. For long-term storage aliquot and store at -80 °C. Avoid repeated freeze/thaw cycles

Storage buffer - PBS, pH 7.4

Concentration - 1.0 mg/mL

Purity - affinity purified

Immunogen - recombinant LPLA2 protein

Clonality - monoclonal; clone # 14E12

Isotype - IgG

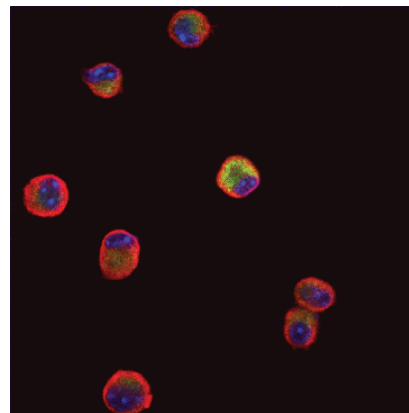
Specificity:

Z-PLPLA2 is a rat monoclonal antibody that recognizes the 5' region of exon 5 which contains the catalytic domain of hLPLA2. This antibody has been tested to confirm the presence of hLPLA2 by western blot and cell staining techniques¹. Z-PLPLA2 recognizes mouse and human LPLA2. No cross reactivity is observed with lecithin-cholesterol acyltransferase (LCAT), the closest gene in sequence identity to LPLA2.

Background:

LPLA2 is thought to play an important role in the homeostasis of cellular phospholipids. In the blood it travels mainly with low-density lipoprotein (LDL). Less than 20% is associated with high-density lipoprotein (HDL). Several lines of evidence suggest that HDL-associated LPLA2 may substantially contribute to the anti-atherogenic activities of HDL.

Data: Immunofluorescence



Mouse alveolar macrophages stained with DAPI (blue), anti-LAMP1 (red, lysosomal marker), and anti-LPLA2 (green). Image adapted with permission from Abe et al. 2008.

References:

1. Abe, A.; Kelly, R.; Kollmeyer, J.; Hiraoka, M.; Lu, Y.; Shayman, J. A., (2008) The secretion and uptake of lysosomal phospholipase A2 by alveolar macrophages. J Immunol 181, (11), 7873-81.

Related Products:

Products	Catalog Number
Assays, Reagents, and Lipids	
LPLA2 Inhibitor Screen	K-7000I
Recombinant LPLA2 Protein	E-7000
P-Lyso PC	L-1516
S-Lyso PC	L-1518
Lyso PC	L-1520

Technical Data Sheet Rev. 2, 08-1-18 - **For research use only.** Not intended or approved for diagnostic or therapeutic use.



Echelon Biosciences Inc.

Ph: 866-588-0455

Fax: 801-588-0497

Echelon-inc.com